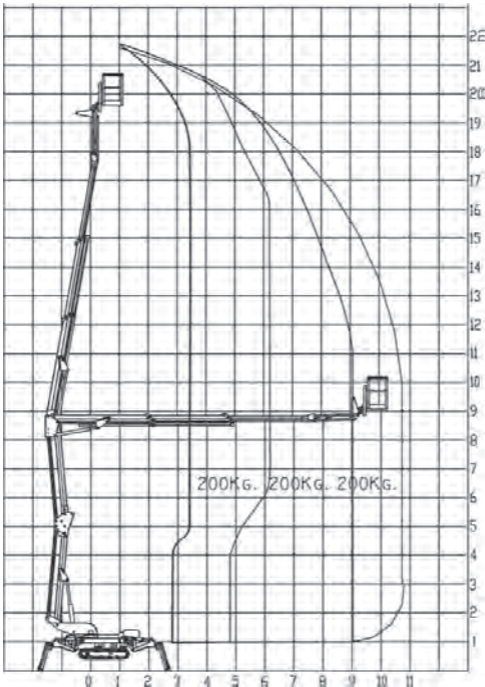


# HAC22

Super compact,  
lightweight, lithium battery  
– zero emissions.



- Lithium battery power - no trailing leads, 6-8 hours on one charge
- Almost silent operation - ideal for hospitals or residential areas
- Radio remote control - allows operator to remain a safe distance away during setup



**HigherAccess**  
Spider Lift Hire Specialists

08456 044 054 [www.higheraccess.co.uk](http://www.higheraccess.co.uk)

# HAC22

Working Height (m)	21.0m
Platform Height (m)	19.0m
Lateral Outreach (m)	10.8m
Safe Load on Cage (kg)	200kg
Cage Rotation (degrees)	160°
Range of Rotation (degrees)	340°
Limited Range of Rotation (one side narrow)	340°
Limited Range of Rotation (both sides narrow)	340°
Cage Dimensions (L x W x H) (m)	1.3 x 0.7 x 1.1m
Removable Cage	Y
Length in travelling position with cage (m)	5.26m
Length in travelling position without cage (m)	4.56m
Width in travelling position with cage (m)	1.30m
Width in travelling position without cage (m)	0.94m
Height in travelling position (m)	1.98m
Net Weight (kg)	3,150
Setup Width - standard - to outside edge (m)	4.18m
Setup Length - standard - to outside edge (m)	4.56m
Setup Width - 1 side narrow - to outside edge (m)	3.20m
Setup Width - both sides narrow - to o/s edge (m)	2.18m
Power Supply	Lithium Battery
Climbing Ability	16°
Setup Ability	16°
Maximum Point Load (kN)	15.53
Load on 400mm Pad (kN/m <sup>2</sup> )	97.06
Load on 600mm Pad (kN/m <sup>2</sup> )	43.14
Load on 800mm Pad (kN/m <sup>2</sup> )	24.27
Adjustable Track Height/Width	Y
Drive Control	Radio remote
Max Drive Speed	0.7km/h

## DISCLAIMER

The information on this page is for guidance only and is subject to change without prior notice in line with the Manufacturer's Development Program. Higher Access and its suppliers cannot be held liable for any damage or injury sustained through use of this information to specify equipment.