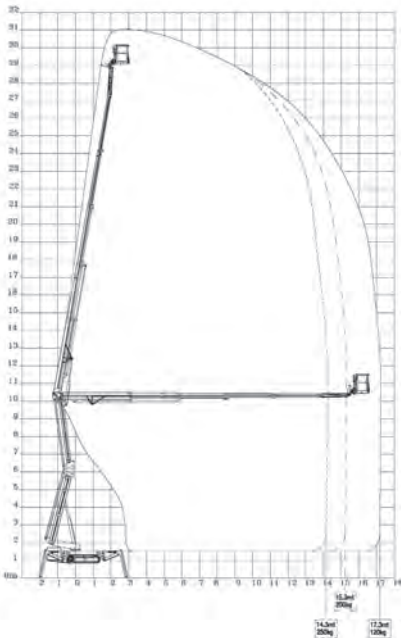


# HASA31

Hybrid technology,  
unbelievable outreach



- Lithium battery and diesel engine powered
- 300kg maximum safe working load
- Anti-entrapment as standard



**HigherAccess**  
Spider Lift Hire Specialists

08456 044 054 [www.higheraccess.co.uk](http://www.higheraccess.co.uk)

<b>HASA31</b>	
Working height (max.) (m)	31.00
Lateral outreach (max.) (m)	17.30
Safe load on cage (max.) (m)	300
Cage rotation	160°
Range of rotation	360°
Range of rotation - one side narrow	360° w. restricted o/reach
Range of rotation - both sides narrow	360° w. restricted o/reach
Cage dimensions (m)	1.4 x 0.8 x 1.1
Removable cage	Y
Length in travelling position with cage (m)	6.45
Length in travelling position without cage (m)	5.75
Width in travelling position with cage (m)	1.38
Width in travelling position without cage (m)	1.01
Height in travelling position (m)	1.99
Net weight (kg)	4,800
Setup width standard (m)	4.60
Setup length standard (m)	4.98
Setup width - one side narrow (m)	3.75
Setup width - both sides narrow (m)	3
Power supply	Hybrid Diesel Lithium
Climbing ability	19°
Setup ability	19°
Maximum point load (kN)	37
Load on 400mm pad (kN/m <sup>2</sup> )	232.88
Load on 600mm pad (kN/m <sup>2</sup> )	103.5
Load on 800mm pad (kN/m <sup>2</sup> )	58.22
Adjustable track height/width	Y
Drive control	Radio remote
Drive speed	3.0km/h

#### **DISCLAIMER**

The information on this page is for guidance only and is subject to change without prior notice in line with the Manufacturer's Development Program. Higher Access and its suppliers cannot be held liable for any damage or injury sustained through use of this information to specify equipment.