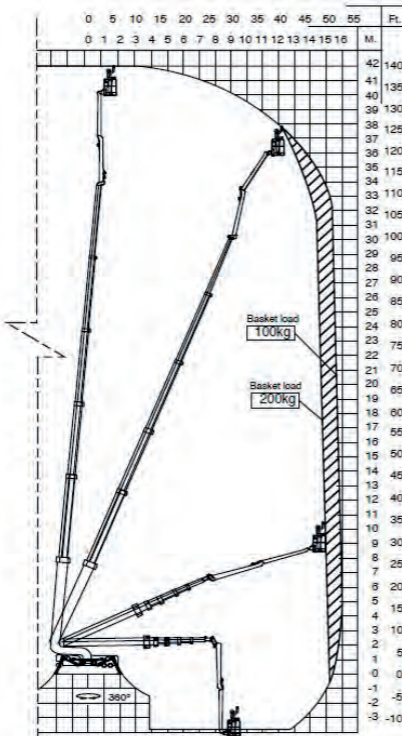


# HAFS420

Unrivalled working envelope, indoors or out.



- Compact transport dimensions - only 1.2m wide
- Double crawler tracks spread the load to work indoors or out
- Battery or diesel power source



**HigherAccess**  
Spider Lift Hire Specialists

08456 044 054 [www.higheraccess.co.uk](http://www.higheraccess.co.uk)

# HAFS420

|   |                  |
|---|------------------|
| Working height  | 42.00m           |
| Platform height   | 40.00m           |
| Lateral outreach  | 16.00m           |
| Safe load on cage   | 200kg            |
| Cage rotation   | 180°             |
| Range of rotation   | 375°             |
| Limited range of rotation - one side narrow outreach only   | Restricted       |
| Limited range of rotation - both sides narrow outreach only | Restricted       |
| Cage dimensions   | 1.4 x 0.8 x 1.1m |
| Removable cage  | Y                |
| Length in travelling position with cage                     | 9.08m            |
| Length in travelling position without cage                  | 8.26m            |
| Width in travelling position with cage                      | 1.40m            |
| Width in travelling position without cage                   | 1.20m            |
| Height in travelling position                               | 1.98m            |
| Net weight  | 7,700kg          |
| Setup width standard  | 5.60m            |
| Setup length standard                                       | 5.60m            |
| Setup width - one side narrow                               | 4.96m            |
| Setup width - both sides narrow                             | 4.30m            |
| Power supply  | Kubota Diesel    |
|   | Battery          |
| Climbing ability  | 20°              |
| Setup ability   | 20°              |
| Maximum point load (kN)                                     | 39.23            |
| Load on 400mm pad (kN/m <sup>2</sup> )                      | 245.16           |
| Load on 600mm pad (kN/m <sup>2</sup> )                      | 108.96           |
| Load on 800mm pad (kN/m <sup>2</sup> )                      | 61.29            |
| Adjustable track height/width                               | No               |
| Drive control   | Radio remote     |
| Drive speed   | 2.7km/h          |

## DISCLAIMER

The information on this page is for guidance only and is subject to change without prior notice in line with the Manufacturer's Development Program. Higher Access and its suppliers cannot be held liable for any damage or injury sustained through use of this information to specify equipment.